

Canon

image**RUNNER**
iR1610 / iR2010



- 16/20 page per minute output
- Compact & easily networked
- Class leading convenience



*Pictured with U.S. Pedestal

NETWORK DIGITAL PRINTER / COPIER

Digital multifunction workgroup solution

Big office performance for small businesses

Introducing Canon's newly developed imageRUNNER iR1610 and iR2010. At speeds of 16 and 20 pages-per-minute respectively, both devices offer digital copying and Super G3 Fax functionality as standard. The imageRUNNER iR1610 and iR2010 extend the feature-set and value proposition of the ever popular imageRUNNER series, serving the general office needs of workgroups and small business enterprises.



With a modular upgrade path, the imageRUNNER iR1610 and iR2010 can support network printing and powerful sending capabilities to ensure that the right information gets to the right people at exactly the right time.

Combined with a user-friendly design and optional document finishing accessories, the imageRUNNER iR1610 and iR2010 are the solution that can take your business to a higher level.

Canon digital technology advantages

Through its inherent digital technology, the imageRUNNER iR1610 and iR2010 streamline the entire document imaging process while delivering exceptional reliability, and Canon's acclaimed image quality.

To ensure the most faithful reproduction of documents, the imageRUNNER iR1610 and iR2010 capture images at true 600 x 600 dpi resolution, and deliver an astounding 2400 x 600 dpi maximised resolution for print, and a superior output of 1200 x 600 dpi enhanced resolution for copy.

With Scan-Once-Print-Many technology, originals are scanned only once, converted to digital images, and then reproduced up to 99 sets. Copy Reservation allows you to scan originals even while the machine is printing another job.

Other features that further simplify your business procedures include built-in Zoom Mode, 2-on-1 and 4-on-1 Image Combination, Two-Page Separation, Margin Mode, and Different-Size Originals Mode.

Input, throughput, output

The iR1610 and iR2010 will increase your efficiency in every task, from the simple to the most complex.

For optimum document feeding productivity, the imageRUNNER iR1610 and iR2010 ship with a standard 50-sheet Automatic Document Feeder and offer up to four 250-sheet paper cassettes and a standard 100-sheet Stack Bypass tray.

Space-saving finishing options include an internal finisher that offers full sorting and stapling functions for professional looking output, or an inner two-way tray system that separates copies and prints for fast distribution.



Automatic Document Feeder



Internal Finisher



Paper Cassettes

Maximise your productivity

Considerable configuration flexibility

The imageRUNNER iR1610 and iR2010 offer considerable flexibility in printer options that allow you to tailor the device to fit your organisation's exact printing needs.

It all starts with an optional print board that's powered by a 200MHz RISC processor for high-performance printing. The printer board supports printing directly from non-networked computers via built-in Parallel and USB ports. To drive even greater functionality with your imageRUNNER iR1610 or iR2010, a 10GB Hard Disk can be added to support document storage and secured print features.

Why stand-alone when you can connect?

Canon's clear advantage lies in our seamless integration with customer networks enabling multiple users the ability to leverage system capabilities and control document management processes right from their desktops. By adding the optional network interface adaptor, the imageRUNNER iR1610 and iR2010 both provide shared network printing and send capabilities for the office or workgroup.



A new level of printing functionality

The imageRUNNER iR1610/iR2010 offers PCL 5e, PCL 6, and genuine Adobe® PostScript® 3™ (with the optional PS Module-B1) page description languages. Canon has created clever print driver software designed with an easy-to-use interface that is friendly for the novice, yet capable enough to handle the needs of power-users.

An intuitively designed control panel provides user-friendly operation at all times, and easy access to every function.

The imageRUNNER iR1610 and iR2010 offer capabilities not found on traditional network laser printers. Some of these enhanced capabilities include the following:

Store

Users can send print jobs to the imageRUNNER iR1610 or iR2010's memory for storage and later use.

Secured Print

Ensures the security of your documents by permitting the entry of a confidential PIN from within the print driver when print jobs are

submitted. Printing will begin only upon entry of the confidential PIN at the device.

Page Composer

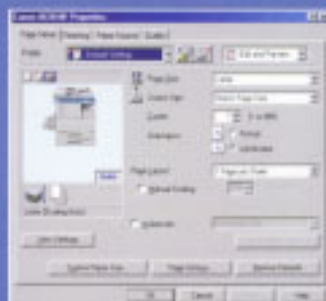
Combines and prints documents that were created in different applications as a single merged document, preview and manipulate the merged file through a thumbnail view, and change settings on-the-fly.

Connectivity software simplified

In addition to easy-to-use print drivers, device management utilities are an integral part of every network-connected imageRUNNER iR1610 and iR2010. These include Canon Remote User-Interface™ (UI) and NetSpot® Suite components, which simplify the complete installation, configuration, and management of the device through a consistent, easy-to-understand user-interface.



Print Driver Page Composer



Print Driver Page Setup Tab



Remote UI



Control Panel

Information

at your fingertips

Watch your cost-savings multiply with
Super G3 Fax technology

Enjoy the significant cost-saving advantages of high-speed Super G3 Fax technology provided as standard with the imageRUNNER iR1610 and iR2010. Transmitting documents at 33.6 Kbps transmission speed (approximately 3 seconds per page), Super G3 technology results in significantly reduced telephone line charges.



Other useful fax features include Confidential Mail Boxes, Auto-dialling, and optional PC Fax capabilities that allow you to transmit fax documents from a networked computer.

Your central communications hub

When equipped with the optional network interface adaptor, your imageRUNNER iR1610 or iR2010 is immediately transformed into a robust communications portal for the high-speed transfer of information.

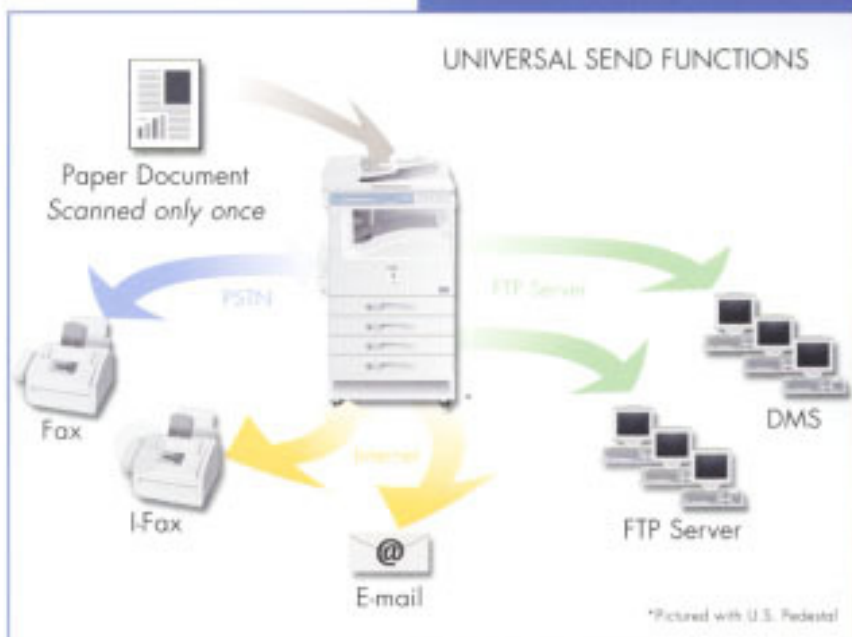
Documents scanned directly into the iR1610 and iR2010 can be distributed to multiple destinations, to individuals or groups of E-mail addresses, to network or host folders and files, to Canon's electronic document management application, and to Internet fax devices. This eliminates the expense and labour associated with printing, forwarding, and filing hard copies.

Furthermore, the iR1610 and iR2010 can automatically route incoming documents to other devices and destinations for remote reception, retrieval,

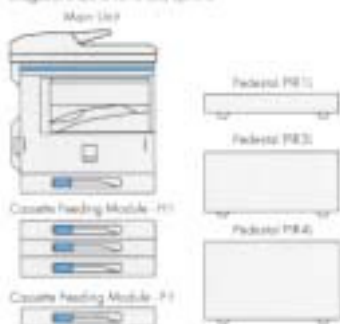
and archiving—ensuring that you're never out of reach from important information.

The image of a leader

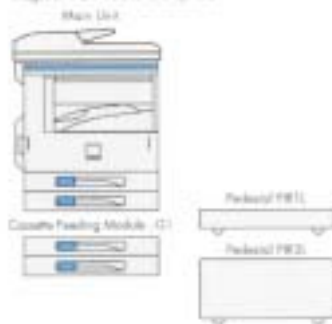
Canon's ground-breaking efforts in creating the digital marketplace have provided us with a considerable advantage in identifying emerging customer needs. As one of the industry's leading producers of network-connected multifunction devices, Canon continues to set new standards for quality, performance, and reliability. That's why you can trust Canon to provide you with the solutions you need to make any workgroup more productive, and any business more competitive.



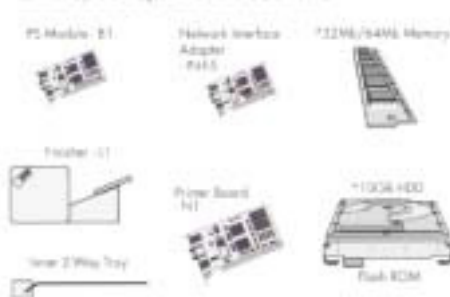
ImageRUNNER i1610 and options



ImageRUNNER i2010 and options



Common Options: ImageRUNNER i1610 and i2010



Specifications

Basic Specifications	i1610 and i2010
Type:	Digital, Multifunction Imaging System
Imaging System:	Laser Dry Electrostatic Transfer
Developing System:	Dry Monocomponent Toner
Fusing System:	Heat Roller Fusing
Image Server Memory:	Standard 48MB RAM (upgradable to 80MB max)
First-copy Time:	6.2 seconds from platen glass
Warm-up Time:	10 Seconds or Less from Sleep Mode 30 Seconds from Main Power Off
Acceptable Originals:	Sheets, Books, 3 Dimensional Items (Up to 7kg)
Max. Original Size:	A3
Max. Copy Size:	A3
Min. Copy Size:	A6R
Scanning Resolution:	600 dpi x 600 dpi
Copy Resolution:	1200 dpi x 600 dpi (Maximum)
Printing Resolution:	2400 dpi x 600 dpi (Maximum)
Halftone:	256 gradations of grey
Exposure Control:	Automatic or Manual
Output Speed:	i1610 18 pages per minute: A4 i1610 9 pages per minute: A3 i2010 20 pages per minute: A4 i2010 9 pages per minute: A3
Power Source:	230V AC, 50Hz, 6A
Magnification Reduction/Enlargement:	50% to 200% in 1% increments
Drum:	OPC-estimated Yield: 21,000 impressions
Toner:	Estimated Yield: 7,850 images (at 6% coverage)
i1610 Dimensions (H x W x D):	652mm x 615mm x 623mm
i2010 Dimensions (H x W x D):	747mm x 615mm x 623mm
Weight:	44kg (i1610), 50.5kg (i2010)

Paper Supply		
Standard:		
i1610	Single 250 Sheet Paper Cassette	100 Sheet Stack System
i2010	Dual 250 Sheet Paper Cassette (500 sheets)	100 Sheet Stack System
Optional:		
i1610	Single 250 Sheet Paper Cassette	Triple 250 Sheet Paper Cassette (750 sheets)
i2010	Dual 250 Sheet Paper Cassette (500 sheets)	
Multiple Copies:	1 to 99	
Paper Weights:	64g/m ² - 90g/m ² (Cassette) 64g/m ² - 126g/m ² (Stack System)	

SuperG3 Fax Board (Standard)	
Applicable Line:	Public Switched Telephone Network (PSTN)
Connector Line:	One
Transmission Time:*	ECM-MWR Approx. 3 seconds per Page (20,000 lines)
Compression System:	MMR, MR, MH, JBIG
Sending Size:	A4R to A3
Auto Dial Function:	Address Book: 200 Destinations (Total)
Image Memory:	Standard 48MB RAM (upgradable to 80MB max. (Sourced from main unit))
Max. Confidential Fax Inboxes:	70 (standard)

Automatic Document Feeder-21 (Standard)	
Acceptable Originals:	B8R - A3
Capacity:	50 Sheets (A4/60g/m ²)
Max. Paper Weight:	128g/m ² (A4)

Cassette Feeding Unit-F1 (Optional with i1610)	
Paper Capacity:	1 x 250 Sheet Paper Cassette
Paper Size:	A3 to A5
Paper Weights:	64g/m ² - 90g/m ²

Cassette Feeding Unit-F1 (Optional with i1610)	
Paper Capacity:	1 x 250 Sheet Paper Cassette
Paper Size:	A3 to A5
Paper Weights:	64g/m ² - 90g/m ²

Cassette Feeding Unit-C1 (Optional with i2010)	
Paper Capacity:	2 x 250 Sheet Paper Cassette
Paper Size:	A3 to A5
Paper Weights:	64g/m ² - 90g/m ²

Feeder-L1 (Optional)	
Number of Trays:	1 Tray
Tray Capacity:	300 Sheets (A4)
Staple Position:	Top Left Corner (15 Sheets)

Printer Board-R1 (Optional)	
Type:	Embedded Post/Network
Processor:	PowerPC485 200MHz RISC Processor
RAM:	Standard: 8MB Optional: 32MB or 64MB (Max. 72MB)
Hard Disk:	Optional 10GB HDD
PDL Support:	PCL3E, PCL6, Postscript 3 (Optional)
Internal Fonts:	45 Scalable Typefaces in 14 Typeface Families; 32 TrueType Fonts
Interface Connections:	IEEE1284, USB 1.1

Ethernet Network Interface Adapter (N-05) (Optional)	
Interface Connections:	Optional: RJ-45 (10/100 Base-T)
Protocol Stacks:	IPX/SPX, 802.2, 802.3, TCP/IP, Apple Talk, NetBIOS/NetBEUI
Network OS:	Novell Netware v3.2, 4.1, 4.11, 4.2, 5.0, 5.1, Windows® 95/98/NT4 4.0/2000/ME/XP, Apple System 7.5 or higher, Solaris 1.5c, 2.5 or higher

* Approximate 3 seconds per page for transmission time based on ITU-T No. 1 Class (MMR, Standard Mode) at 33.6 Kbps modem speed when transmitting to another i-24 machine. The Public Switched Telephone Network (PSTN) currently supports 28.8 Kbps modem speeds or lower, depending on telephone line conditions.

® All company and/or product names are trademarks and/or registered trademarks of their respective manufacturers in their markets and/or countries. Canon reserves the right to change specifications without notice.



Canon

Australia

Sydney

1 Thomas Holt Drive
North Ryde NSW 2113
Ph (02) 9895 2600
Fax (02) 9887 3137

Melbourne

33 Lakeside Drive
Burwood East
VIC 3151
Ph (03) 9881 0000
Fax (03) 9881 0316

Brisbane

276 Gladstone Road
Dutton Park QLD 4107
Ph (07) 3214 6000
Fax (07) 3044 1019

Adelaide

1 South Road
Thebarton SA 5831
Ph (08) 8201 9193
Fax (08) 8352 2818

Perth

68 Heiner Road
Osborne Park
WA 6017
Ph (08) 9347 2222
Fax (08) 9242 4120

Canberra

98 Benzie Street
Fyshwick ACT 2609
Ph (02) 6206 5999
Fax (02) 6206 5932

New Zealand

Auckland

Akaroa Business Park
Akaroa Drive
Northcote
Ph (09) 489 0300
Fax (09) 489 0299